



SOUTH AFRICAN MARITIME SAFETY AUTHORITY MARINE NOTICE NO 3 OF 2021

www.samsa.org.za

146 Lunnon Road, Hillcrest, Pretoria 0083

PO Box 13186
Hatfield 0028
Tel: +27 12 366 2600
Fax: +27 12 366 2601
Email:
marinenotices@samsa.org.za

ISSUE DATE	21 January 2021	EXPIRY DATE		REFERENCE	SM6/5/2/1
THE REVIEW OF 2020 INCIDENTS RESULTING IN COMMERCIAL FISHING FATALITIES					

ALL PRINCIPAL OFFICERS, OWNERS, OPERATORS, MANAGERS, SKIPPERS, CREW & SAFETY OFFICERS OF FISHING VESSELS AND TRAINING INSTITUTIONS

<u>Affected Marine Notices</u>	
<i>Cancelled or superseded</i>	4 of 2020
<i>Read in conjunction with:</i>	

SUMMARY

This notice advises the fishing industry of the incidents that lead to deaths in the domestic fishing industry and compares trends over the previous years. Owners, managers, skippers and safety officers are encouraged to review their operations and through the use of risk assessments identify steps that can be undertaken to eliminate reoccurrences.

In 2020, 4 fishermen lost their lives in 3 separate operational incidents at sea:

- 1 fisherman lost his life when a small fishing boat capsized in large swells outside Paternoster.
- 1 fisherman lost his life off Paternoster when a small fishing vessel lost power and the crew attempted to row ashore. An oar was lost and a fisherman who jumped overboard to retrieve the oar was separated from the vessel in strong winds.
- 2 fishermen lost their lives when a small fishing vessel capsized in the surf off Rooi Els. 3 fishers managed to swim ashore. 1 fisherman’s body was found in the surf and another fisherman was missing.

In 2020, 2 fishermen died in non-operational instances:

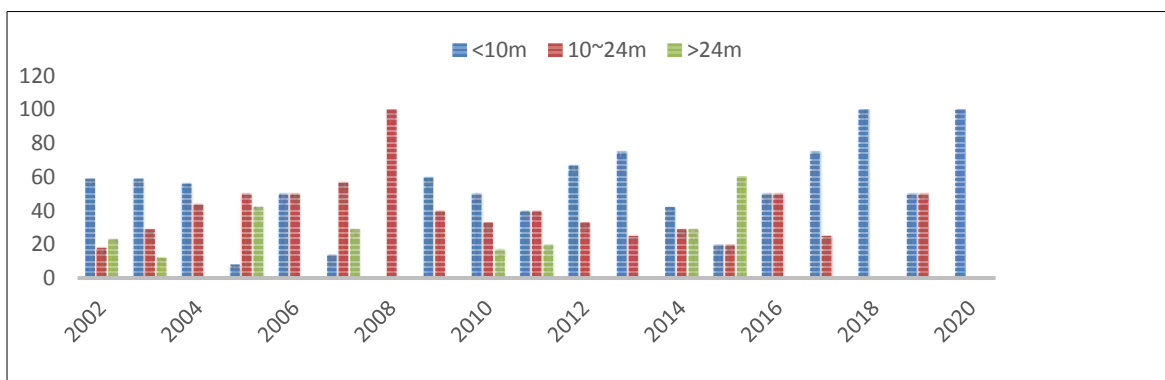
- An engineer went missing off a crayfish vessel berthed alongside at Pepper Bay between 14h00 on 22nd January and 0030 on the 23rd. The missing seafarer and was later found floating face-down in the harbour.
- A crewmember slipped off a harbour fender while attempting to board a squid vessel in Port Elizabeth harbour. His body was recovered by divers the following day.

SAMSA offers trauma counselling, assistance with securing UIF, COID and insurance and the facilitation of social grants though the Welfare Office, Mrs N Dubase (021 421 6170 email ndubase@samsa.org.za). In addition community and workplace seminars are offered, at no cost to the industry on HIV/AIDS awareness and alcohol/substance abuse. Fishing operators are strongly recommended to review their Drug and Alcohol Policies and Procedures.

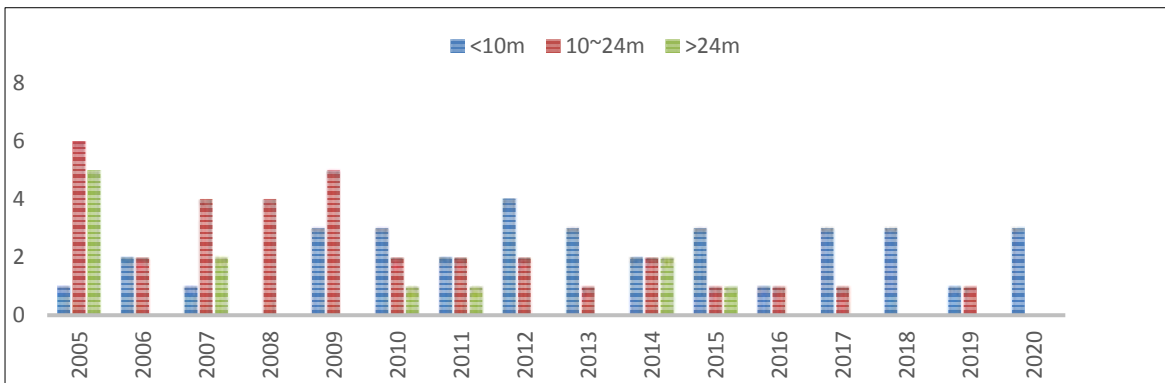
The operational incidents can be categorized as follows:

1. **Number of incidents by vessel size.**

Incidents are shown as a percentage by size category.

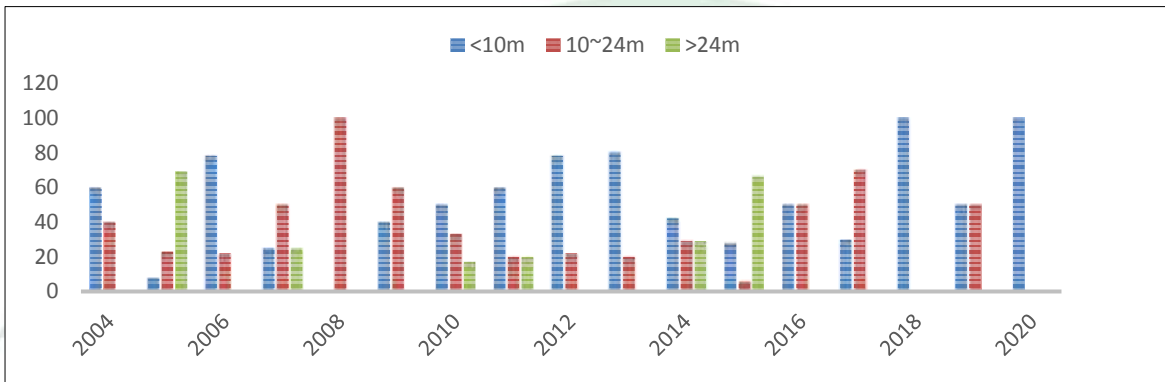


Incidents are shown by number per size category.

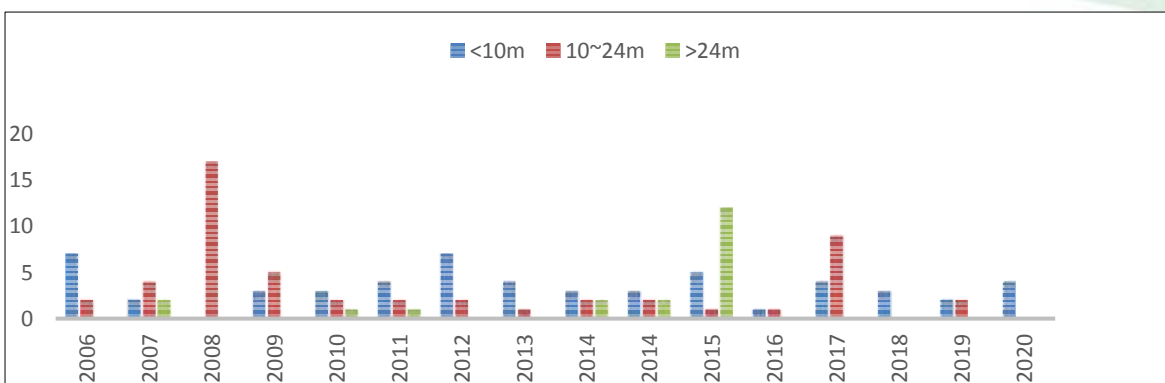


2. Deaths by size category.

Deaths are shown as a percentage by size category.



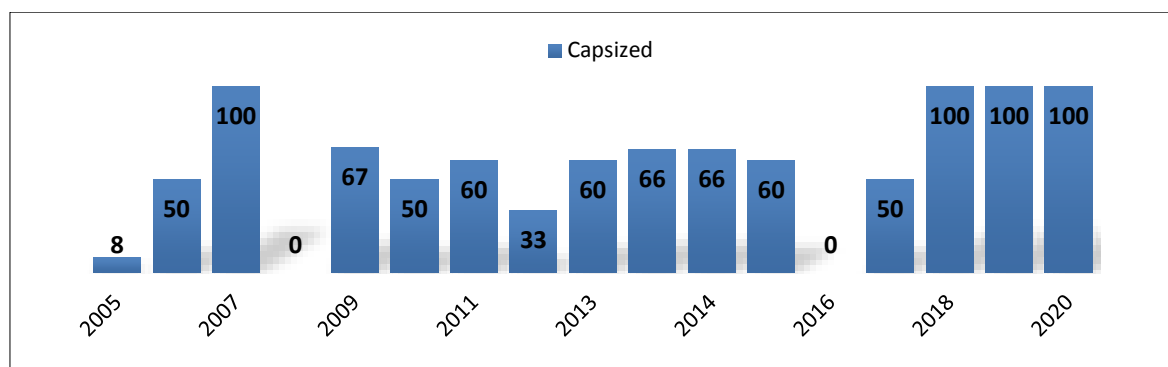
Deaths are shown as numbers per size category.



3. Types of incidents.

Types of incident are shown as a percentage per size category.

a. Capsized (Vessels <10m)

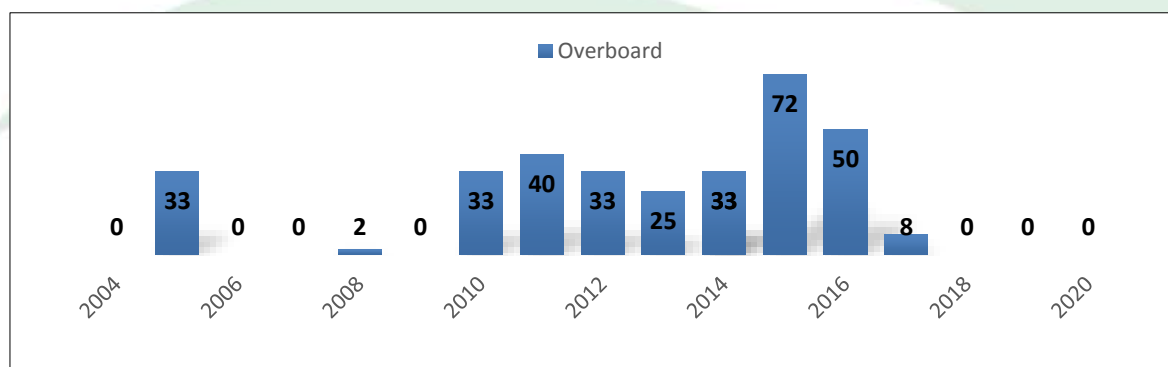


Capsize of small vessels is primarily due to 4 reasons:

- at sea in unsuitable weather conditions;
- hauling of anchors over the side and not the bow;
- too close to the shore; and
- overloading.

The requirement that flotation aids are worn within the surf zone can only reduce the number of fatalities.

b. Overboard



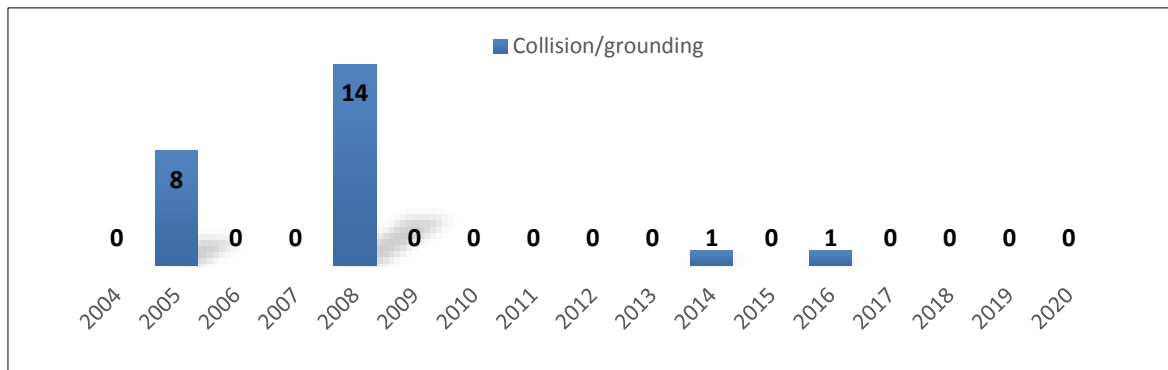
After the capsizing of small vessels this is the single largest category leading to death. Crew members lost overboard are either lost:

- while shooting or hauling fishing gear;
- at night when the vessel is steaming;
- and recently during an unfortunate incident, after abandoning their vessel in rough seas.

To reduce this reason for death the following steps should be taken onboard:

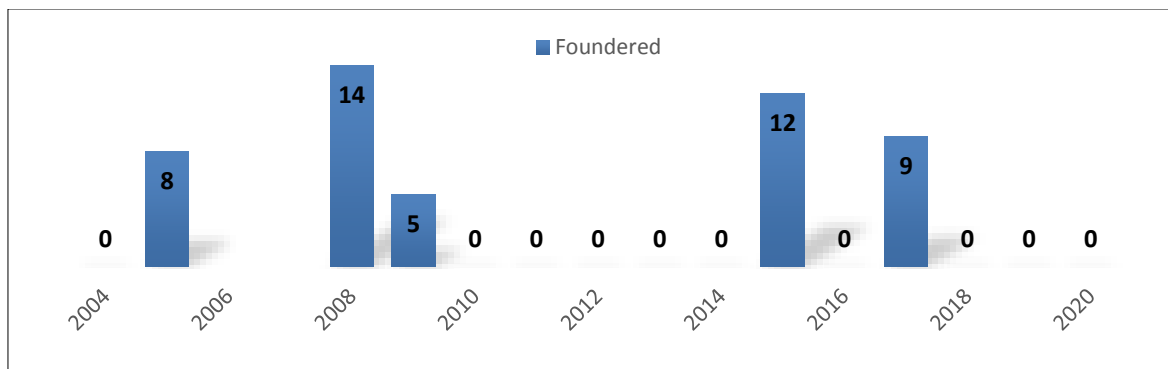
- flotation aids are worn at all times on deck where the nature of the work can lead to a crew member being knocked overboard,
- crew members that go on deck while there is no fishing operation should never be alone. Skippers are encouraged to introduce a buddy system where there are always 2 crew members together, this is especially important at night; and
- when working near or at the side of the vessel safety harnesses should be worn.
- skippers and officers to take into consideration the dangers of fatigue due to prolonged fishing operations and to emphasize the importance of safety briefings.

c. **Collision/Grounding. (Fishers lost)**



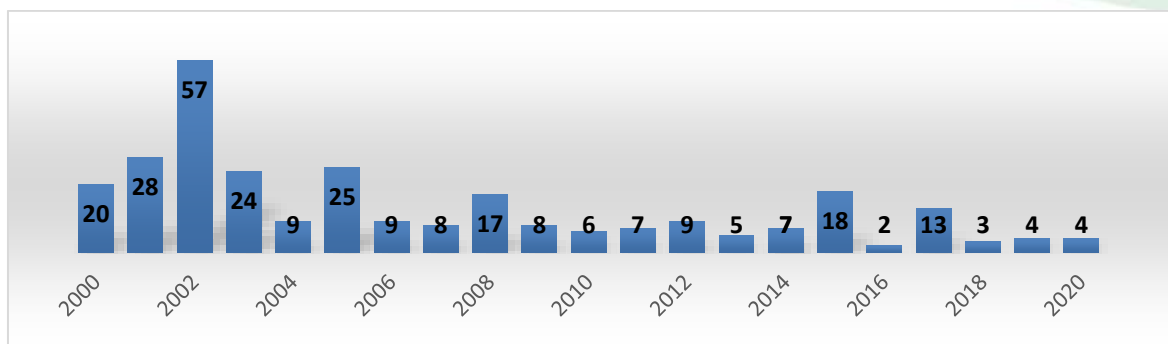
Groundings are totally avoidable if the watchkeeping officers and crew adhere to the principles of good seamanship and watchkeeping.

d. **Foundered (Loss of a vessel >10m (Fishers lost))**



It is vital that skippers continually monitor all methods of receiving weather reports and consider if the fishing trip is safe in the predicted weather conditions. Early consideration should be given to seeking shelter when the predicted weather may endanger the vessel.

4 Deaths per year



SAMSA offers safety workshops in communities that operate small vessels. If you would like our Fishing Safety Specialist to visit your community please contact Selwyn Bailey on 041 582 2138 or sbailey@samsa.or.za. SAMSA will engage fishing vessel operators on the substance abuse issue on board vessels as a matter of urgency.

5 Deaths by area

Year	Sald	C.T	M.B	P.E	E.L	Dbn	R.B	Ocean/	Total
1996	3	0	2	12	0	1	0	0	18
1997	6	8	1	0	0	0	0	0	15
1998	1	1	0	1	0	1	0	17	21
1999	0	2	2	45	0	1	1	0	51
2000	6	3	6	2	0	2	1	0	20
2001	4	7	2	10	0	0	5	0	28
2002	11	17	20	4	3	2	0	0	57
2003	16	2	2	2	0	2	0	0	24
2004	5	1	2	1	0	0	0	0	9
2005	1	3	1	19	1	0	0	0	25
2006	1	5	2	1	0	0	0	0	9
2007	4	2	0	2	0	0	0	0	8
2008	0	3	0	14	0	0	0	0	17
2009	3	0	5	0	0	0	0	0	8
2010	1	1	1	3	0	0	0	0	6
2011	2	1	2	1	1	0	0	0	7
2012	1	5	0	1	0	1	1	0	9
2013	2	5	0	2	0	0	0	0	9
2014	4	1	0	1	0	1	0	0	7
2015	3	15	0	0	0	0	0	0	18
2016	1	0	1	0	0	0	0	0	2
2017	1	1	0	9	2	0	0	0	13
2018	3	0	0	0	0	0	0	0	3
2019	2	2	0	0	0	0	0	0	4
2020	2	2	0	0	0	0	0	0	4
Total	83	87	49	131	6	11	8	17	391

--- 000 ---